



PHANTOM FUKUSHIMA NEUROLOGICAL HOLDING SYSTEMS

Latest generation in neurosurgical access



THE EXPERT BEHIND IT ALL

Dr. Takanori Fukushima

The Phantom Fukushima™ Neurological Holding System was designed following Dr. Takanori Fukushima's unending pursuit of millimeter precision surgery.

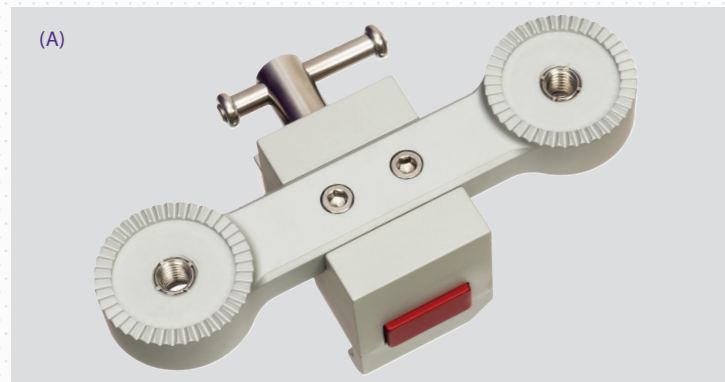
As a leading expert with over 16,000 skull base cases¹ completed to date, Dr. Fukushima knows the demands of today's surgeon. TeDan Surgical Innovations (TSI) leverages this knowledge to create the latest generation in neurosurgery access — with system stability at the forefront.

Equipped with interlocking starburst connections and robust frame composition, the Phantom Fukushima Neurological Holding System is rejuvenating today's neurosurgery access.



ENABLING UNWAVERING SURGEON FOCUS

The latest generation in brain retraction systems bring simplicity to complexity with best-in-class flex arm maneuverability and a rock solid design, enhancing surgeon focus in challenging cases. This stable table-mounted system forms a 360° frame assembly to ensure comprehensive patient access.

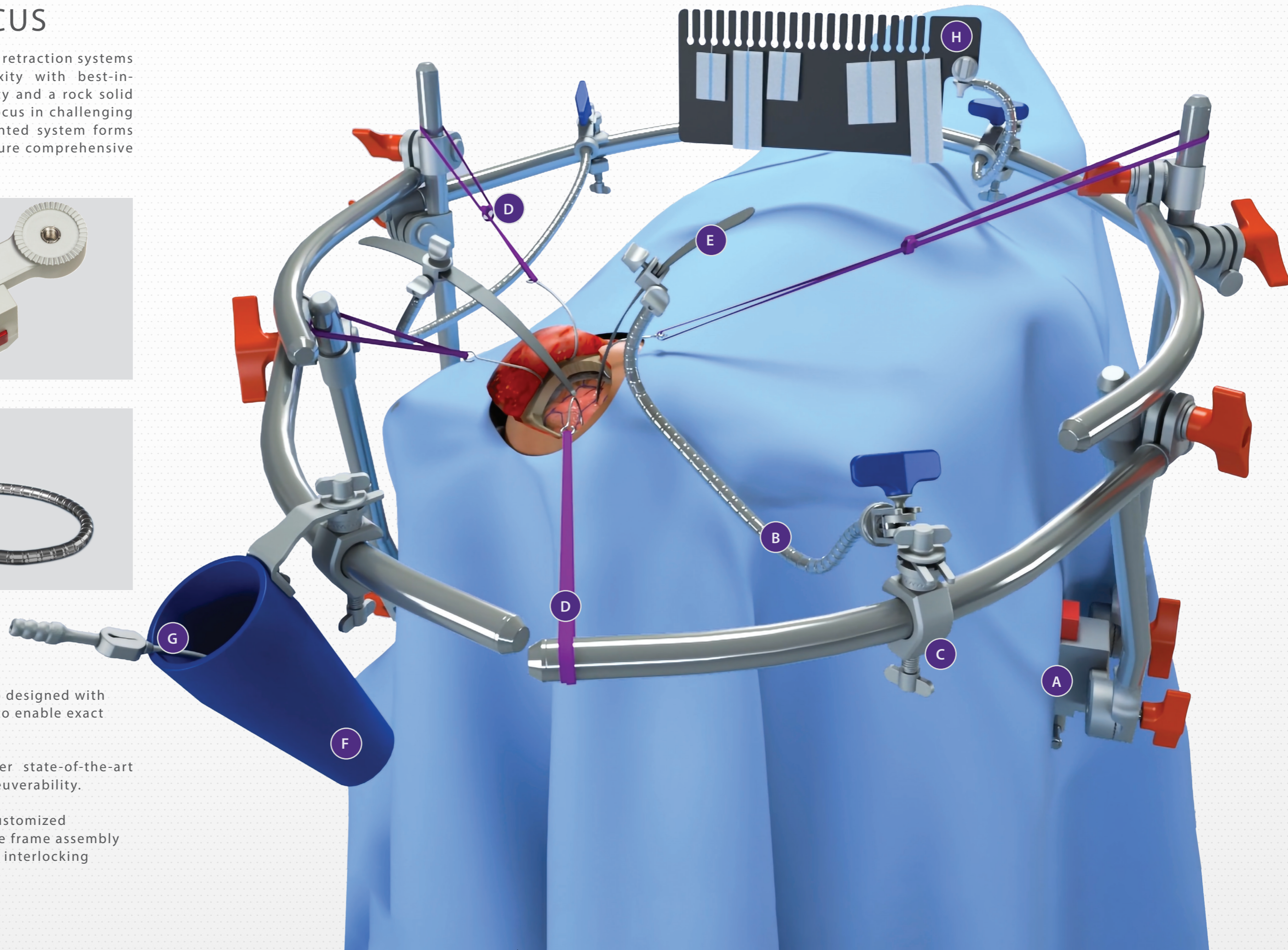


Precise Positioning Made Simple

(A) Dual Starburst Table Clamp designed with robust starburst interface to enable exact positioning and stability.

(B) Fukushima Flex Arms offer state-of-the-art holding strength and maneuverability.

(C) Flex Arm Holders enable customized placement anywhere on the frame assembly and angle adjustment with interlocking teeth.

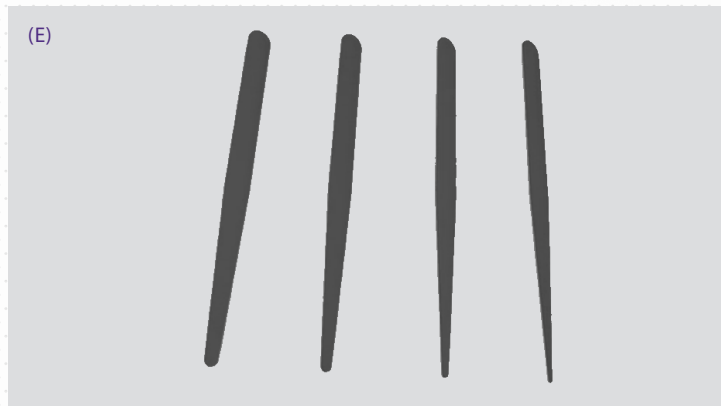


INDIVIDUALIZED SETUP CONFIGURATION



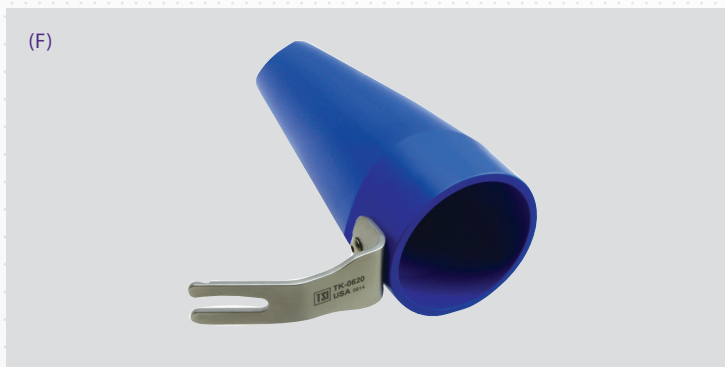
Scalp Hooks

Available in four different sizes featuring an atraumatic tip design. Two or three bands may be used to adjust scalp hook positioning.



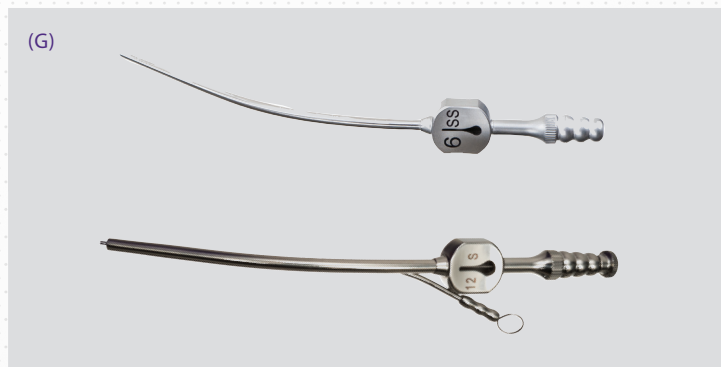
Tapered Brain Spatulas

Spatulas are malleable and available in four size and tip variations to accommodate diverse patient anatomies.



Instrument Holder

Holds saline solution helping to remove debris from bipolar forceps tips.



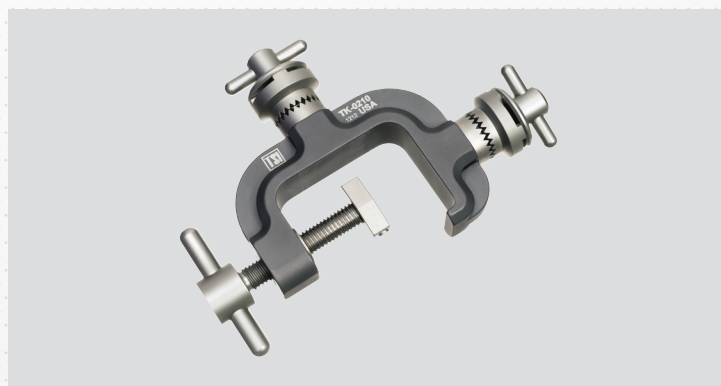
Suctions and Suction Irrigators

Equipped with a malleable, stainless steel shaft. The tapered design prevents the tube from clogging, minimizing continuous surgical disruptions.



Neuro Pattie Tray

Organizes patties for efficient and on-demand access throughout procedure.



Dual Flex Arm Holder

Attaches directly to skull clamp to enable a low profile setup when only two flex arms are required.

PHANTOM FUKUSHIMA NEUROLOGICAL HOLDING SYSTEMS

TK-5000

CAT. NO.	DESCRIPTION	QTY.
HS-0305	Flex Arm, Light Cable Holder, Large	1
ML-0045	Light Cable, Standard Curve, 10'	1
ML-0051	LED Light Source	1
TK-0101	Neuro Flex Arm, 38 CM (14.5")	3
TK-0102	Neuro Flex Arm, 42 CM (16.5")	2
TK-0103	Neuro Flex Arm, 16.5 CM (6.5")	1
TK-0105	Pattie Tray	1
TK-0150	Spatula Holder	6
TK-0200	Single Flex Arm Holder	5
TK-0210	Skull Clamp Dual Flex Arm Holder	1
TK-0300	Dual Starburst Table Clamp	2
TK-0308	Vertical Post, Rear	2
TK-0310	Vertical Post, Front	2
TK-0312	U-Bar, Side	2
TK-0314	U-Bar, Front	2
TK-0316	U-Bar, Rear	2
TK-0620	Neuro Instrument Holder	1
TK-0700-01	Instrument Tray 1, TK-5000 & TK-5001	1
TK-0700-02	Instrument Tray 2, TK-5000 & TK-5001	1
TK-0700-03	Instrument Tray 3, TK-5000	1
TK-1204	Malleable Tapered Spatula, 200 MM, 2.2 MM, Stainless Steel	1
TK-1205	Malleable Tapered Spatula, 200 MM, 3.8 MM, Stainless Steel	1
TK-1206	Malleable Tapered Spatula, 200 MM, 5.8 MM, Stainless Steel	1
TK-1207	Malleable Tapered Spatula, 200 MM, 7.0 MM, Stainless Steel	1
TK-1300	Suction Irrigator, 12 Fr, 100 MM	1
TK-1302	Suction Irrigator, 14 Fr, 100 MM	1
TK-1310	Suction Irrigator, 8 Fr, 120 MM	1
TK-1312	Suction Irrigator, 10 Fr, 120 MM	1

SINGLE USE PRODUCTS

TK-0400	Blunt Scalp Hook, X-Small	1
TK-0402	Blunt Scalp Hook, Small	1
TK-0404	Blunt Scalp Hook, Medium	1
TK-0408	Blunt Scalp Hook, Large	1

TK-5001

CAT. NO.	DESCRIPTION	QTY.
TK-0101	Neuro Flex Arm, 38 CM (14.5")	2
TK-0102	Neuro Flex Arm, 42 CM (16.5")	1
TK-0150	Spatula Holder	3
TK-0200	Single Flex Arm Holder	3
TK-0300	Dual Starburst Table Clamp	1
TK-0308	Vertical Post, Rear	1
TK-0310	Vertical Post, Front	1
TK-0312	U-Bar, Side	1
TK-0314	U-Bar, Front	1
TK-0316	U-Bar, Rear	1
TK-0700-01	Instrument Tray 1, TK-5000 & TK-5001	1
TK-0700-02	Instrument Tray 2, TK-5000 & TK-5001	1
TK-0700-03	Instrument Tray 3, TK-5000 & TK-5001	1
TK-1204	Malleable Tapered Spatula, 200 MM, 2.2 MM, Stainless Steel	1
TK-1205	Malleable Tapered Spatula, 200 MM, 3.8 MM, Stainless Steel	1
TK-1206	Malleable Tapered Spatula, 200 MM, 5.8 MM, Stainless Steel	1
TK-1207	Malleable Tapered Spatula, 200 MM, 7.0 MM, Stainless Steel	1

Phantom Fukushima and Phantom TK are trademarks of TeDan Surgical Innovations, LLC.

Image courtesy of Takanori Fukushima, MD (page 5).

Some of the images within this brochure have been animated to demonstrate specific product features (pages 2, 3, 4).

References:

¹ "Website of Neurosurgeon Takanori Fukushima." Website of Neurosurgeon Takanori Fukushima, takanorifukushima.com/.



Ph: 713-726-0886 Fax: 713-726-0846 Toll Free: 877-726-0886
 12615 West Airport Blvd., Suite #200, Sugar Land, Texas 77478
 Email: info@tedansurgical.com
www.tedansurgical.com
 LIT-0072, REV 3 ©TSI 2018